

Astronomical databases of Nikolaev Observatory

Y. Protsyuk and A. Mazhaev

Nikolaev Astronomical Observatory, Ukraine
 email: yuri@mao.nikolaev.ua

Abstract. Several astronomical databases were created at Nikolaev Observatory during the last years. The databases are built by using MySQL search engine and PHP scripts. They are available on NAO web-site <http://www.mao.nikolaev.ua>.

Keywords. astronomical data bases: miscellaneous, catalogs

1. Development of the astronomical databank

Development of the astronomical databank of NAO has begun since 1995, the year of the first CCD observations with the Axial Meridian Circle. Some astrometric catalogues and data of the CCD observations were included into this databank in 1995 (Kovalchuk *et al.* 1997).

A local area network has considerably grown since 1995, and today it includes about 50 PC in four separate buildings. Two dedicated servers manage the network. Control computers of three CCD telescopes, such as the Axial Meridian Circle (AMC), the Multi Channel Telescope (MCT), the Fast Robotic Telescope (FRT) are also connected to the network.

All obtained data and results of data processing are added to the common databank of NAO (Protsyuk *et al.* 2005, Pinigin *et al.* 2005). The daily average volume of the new astronomical information obtained from the CCD instruments makes from 300MB up to 7GB, depending on the purposes and conditions of observations. The total volume of information was about 340GB in the middle of 2007 (Fig. 1). The total volume of information obtained from other sources such as astronomical catalogues makes about 50GB.

The data of CCD observations obtained from the telescopes of NAO and other observatories (Fig. 2) has been handled in automatic and semi-automatic mode for determination of coordinates of observed stars, minor planets and other objects since 1996 (Kovalchuk *et al.* 1997, Protsyuk 2000).

All received data are stored on servers in two copies, namely, working and backup. Also we make two copies of observational data as archives on DVD. One copy is available for users. Another copy is stored in a central storage of NAO. All raw observational data have been stored in FITS format since 1998. Also, the databank of NAO includes the results of data processing as pixel coordinates for all star-shaped objects captured on the CCD frames.

The network has been connected to the Internet via the first dedicated line since the end of 2004 and the second one since the middle of 2007 (Fig. 3). It allows us to carry out fast transmission of raw observational data through the Internet.

The glass library of NAO contains more than 8000 photographic plates. We have started a program of digitizing of photographic plates with resolution of 2400DPI for

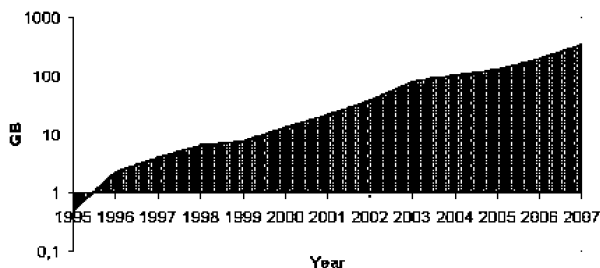


Figure 1. Growth of data volume obtained during CCD observations, GB

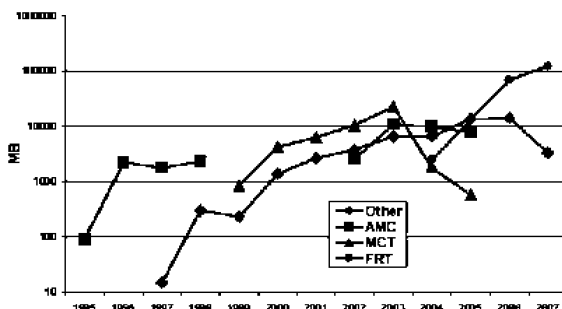


Figure 2. Volume of data obtained from different telescopes, MB

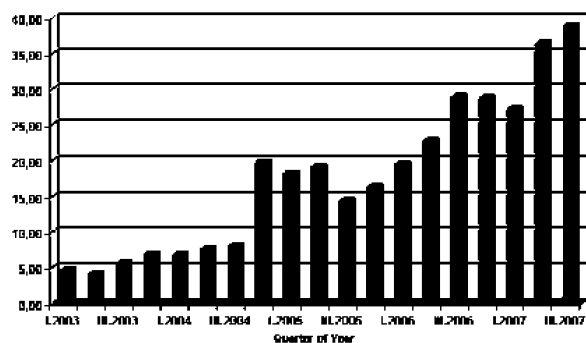


Figure 3. Volume of the Internet traffic, GB

astrometry and 600DPI for preview since the beginning of 2007 (Fig. 4). Now we have about 1000 images for preview and 150 for astrometry.

We have also started digitizing and optical character recognition of printed catalogues and scientific publications (Fig. 5). 27 stellar catalogues were digitized and included in the database of catalogues.

2. Development of the astronomical databases

Development of astronomical databases has started since 2004. Several astronomical databases were created during last years. They are available on NAO web site [http : //www.mao.nikolaev.ua](http://www.mao.nikolaev.ua) (Fig. 7):

- The databases of photographic and CCD observations;
- The database of astrometric catalogues;
- The catalogue of artificial satellites and space debris;
- The database of ionosphere sounding.

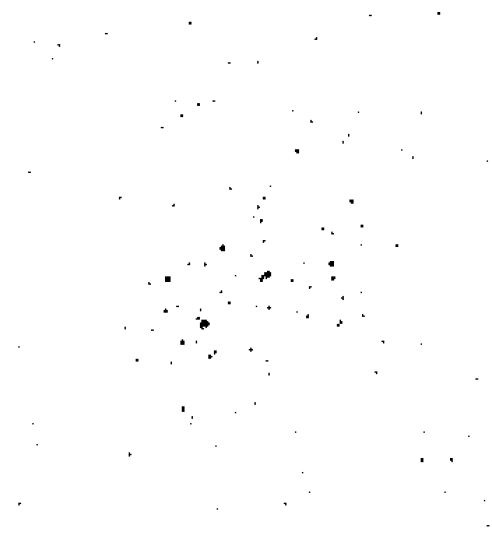


Figure 4. Sample of digitized photoplate

- 37 -
TABLE XXX

α	δ	μ_{α}	μ_{δ}	σ_{α}	σ_{δ}	$\sigma_{\mu_{\alpha}}$	$\sigma_{\mu_{\delta}}$
0	00	+007227.39	0731	4.254	+0731	4.254	0.000
1	11	+054951.18	1206	0.000	+0731	4.254	0.000
2	08	+011515.13	0608	0.000	+0731	4.254	0.000
3	07	+010010.01	0115	0.000	+0731	4.254	0.000
4	07	+003015.00	0009	0.000	+0731	4.254	0.000
5	08	+011515.13	0608	0.000	+0731	4.254	0.000
6	10	+011515.13	0608	0.000	+0731	4.254	0.000
7	11	+074544	4742	0.000	+0731	4.254	0.000
8	09	+011515.13	0608	0.000	+0731	4.254	0.000
9	11	+074544	4742	0.000	+0731	4.254	0.000
10	11	+074544	4742	0.000	+0731	4.254	0.000
11	09	+011515.13	0608	0.000	+0731	4.254	0.000
12	11	+074544	4742	0.000	+0731	4.254	0.000
13	07	+010010.01	0115	0.000	+0731	4.254	0.000
14	07	+010010.01	0115	0.000	+0731	4.254	0.000
15	08	+011515.13	0608	0.000	+0731	4.254	0.000
16	08	+011515.13	0608	0.000	+0731	4.254	0.000
17	08	+011515.13	0608	0.000	+0731	4.254	0.000
18	08	+011515.13	0608	0.000	+0731	4.254	0.000
19	08	+011515.13	0608	0.000	+0731	4.254	0.000
20	08	+011515.13	0608	0.000	+0731	4.254	0.000
21	08	+011515.13	0608	0.000	+0731	4.254	0.000
22	08	+011515.13	0608	0.000	+0731	4.254	0.000
23	08	+011515.13	0608	0.000	+0731	4.254	0.000
24	08	+011515.13	0608	0.000	+0731	4.254	0.000
25	08	+011515.13	0608	0.000	+0731	4.254	0.000
26	08	+011515.13	0608	0.000	+0731	4.254	0.000
27	08	+011515.13	0608	0.000	+0731	4.254	0.000
28	08	+011515.13	0608	0.000	+0731	4.254	0.000
29	08	+011515.13	0608	0.000	+0731	4.254	0.000
30	08	+011515.13	0608	0.000	+0731	4.254	0.000
31	08	+011515.13	0608	0.000	+0731	4.254	0.000
32	08	+011515.13	0608	0.000	+0731	4.254	0.000
33	08	+011515.13	0608	0.000	+0731	4.254	0.000
34	08	+011515.13	0608	0.000	+0731	4.254	0.000
35	08	+011515.13	0608	0.000	+0731	4.254	0.000
36	08	+011515.13	0608	0.000	+0731	4.254	0.000
37	08	+011515.13	0608	0.000	+0731	4.254	0.000
38	08	+011515.13	0608	0.000	+0731	4.254	0.000
39	08	+011515.13	0608	0.000	+0731	4.254	0.000
40	08	+011515.13	0608	0.000	+0731	4.254	0.000
41	08	+011515.13	0608	0.000	+0731	4.254	0.000
42	08	+011515.13	0608	0.000	+0731	4.254	0.000
43	08	+011515.13	0608	0.000	+0731	4.254	0.000
44	08	+011515.13	0608	0.000	+0731	4.254	0.000
45	08	+011515.13	0608	0.000	+0731	4.254	0.000
46	08	+011515.13	0608	0.000	+0731	4.254	0.000
47	08	+011515.13	0608	0.000	+0731	4.254	0.000
48	08	+011515.13	0608	0.000	+0731	4.254	0.000
49	08	+011515.13	0608	0.000	+0731	4.254	0.000
50	08	+011515.13	0608	0.000	+0731	4.254	0.000
51	08	+011515.13	0608	0.000	+0731	4.254	0.000
52	08	+011515.13	0608	0.000	+0731	4.254	0.000
53	08	+011515.13	0608	0.000	+0731	4.254	0.000
54	08	+011515.13	0608	0.000	+0731	4.254	0.000
55	08	+011515.13	0608	0.000	+0731	4.254	0.000
56	08	+011515.13	0608	0.000	+0731	4.254	0.000
57	08	+011515.13	0608	0.000	+0731	4.254	0.000
58	08	+011515.13	0608	0.000	+0731	4.254	0.000
59	08	+011515.13	0608	0.000	+0731	4.254	0.000
60	08	+011515.13	0608	0.000	+0731	4.254	0.000
61	08	+011515.13	0608	0.000	+0731	4.254	0.000
62	08	+011515.13	0608	0.000	+0731	4.254	0.000
63	08	+011515.13	0608	0.000	+0731	4.254	0.000
64	08	+011515.13	0608	0.000	+0731	4.254	0.000
65	08	+011515.13	0608	0.000	+0731	4.254	0.000
66	08	+011515.13	0608	0.000	+0731	4.254	0.000
67	08	+011515.13	0608	0.000	+0731	4.254	0.000
68	08	+011515.13	0608	0.000	+0731	4.254	0.000
69	08	+011515.13	0608	0.000	+0731	4.254	0.000
70	08	+011515.13	0608	0.000	+0731	4.254	0.000
71	08	+011515.13	0608	0.000	+0731	4.254	0.000
72	08	+011515.13	0608	0.000	+0731	4.254	0.000
73	08	+011515.13	0608	0.000	+0731	4.254	0.000
74	08	+011515.13	0608	0.000	+0731	4.254	0.000
75	08	+011515.13	0608	0.000	+0731	4.254	0.000
76	08	+011515.13	0608	0.000	+0731	4.254	0.000
77	08	+011515.13	0608	0.000	+0731	4.254	0.000
78	08	+011515.13	0608	0.000	+0731	4.254	0.000
79	08	+011515.13	0608	0.000	+0731	4.254	0.000
80	08	+011515.13	0608	0.000	+0731	4.254	0.000
81	08	+011515.13	0608	0.000	+0731	4.254	0.000
82	08	+011515.13	0608	0.000	+0731	4.254	0.000
83	08	+011515.13	0608	0.000	+0731	4.254	0.000
84	08	+011515.13	0608	0.000	+0731	4.254	0.000
85	08	+011515.13	0608	0.000	+0731	4.254	0.000
86	08	+011515.13	0608	0.000	+0731	4.254	0.000
87	08	+011515.13	0608	0.000	+0731	4.254	0.000
88	08	+011515.13	0608	0.000	+0731	4.254	0.000
89	08	+011515.13	0608	0.000	+0731	4.254	0.000
90	08	+011515.13	0608	0.000	+0731	4.254	0.000

Figure 5. Sample of digitized catalogue

Overall size of databases is about 200MB. Development of new databases is continuing. The databases allow users to search information about observations by using seven different graphical interfaces. The databases are built by using MySQL search engine and PHP scripts.

Now these databases contain information about CCD observations obtained in 1996 – 2006 and photographic observations obtained in 1929 – 1931 and 1961 – 1999 (Fig. 6). The database of catalogues can be connected to interactive client side application such as Aladin allowing the user to visualize data in the field of search. The catalogues can also be visualized in the VOTable or ASCII formats by using such application as TopCat, which allows the user to carry out wide range of data processing.

The databases of photographic and CCD observations allow users to search information by using five different graphical interfaces. The search is possible by coordinates or by

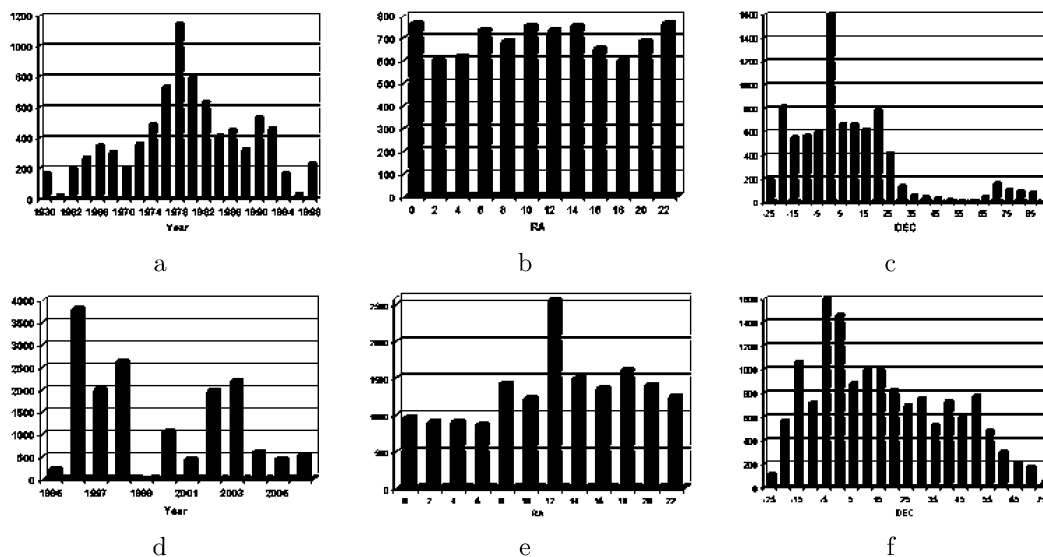


Figure 6. Distribution of photoplates (top) and CCD frames (bottom) by year of observation (a,d), RA (b,e) and DEC (c,f) in databases of photographic and CCD observations.

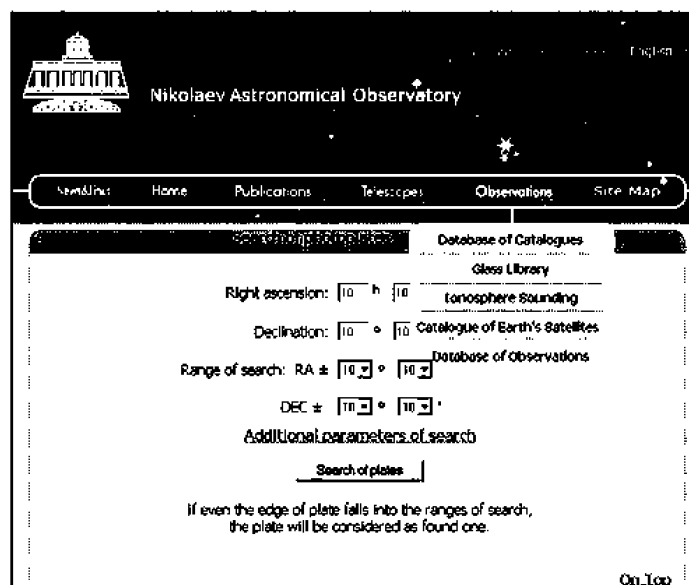


Figure 7. View of search page on web site

object. The databases of photographic and CCD observations allow users to search plates by using the center of search and ranges of search in right ascension and declination. The database of photographic observations allows users to search plates by using the period of observations and observational campaign. The database of CCD observations allows users to search CCD images by using the period and objects of observations. The database of observations also allows users to search plates and CCD frames simultaneously.

The database of astrometric catalogues allows users to search information by using the coordinate center and radius of search.

Database of ionosphere sounding has been recorded since 2002. The graphical data is updated every 5 minutes and is available for online search (Fig. 8).

The Earth satellites in catalogue are separated in two groups: Geostationary Earth Orbit (GEO) satellites and space debris; Low Earth Orbit (LEO) satellites. GEO

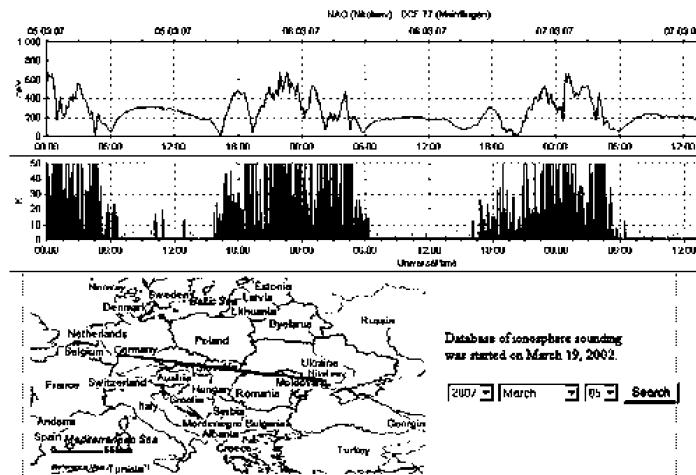


Figure 8. View of ionosphere sounding record

satellites and space debris were observed with the Multi-Channel Telescope in 2002–2004 and with the Fast Robotic Telescope in 2004 – 2007. LEO satellites were observed with the Fast Robotic Telescope in 2004 – 2007.

Several our catalogues were included into the international databases, such as the CDS in Strasbourg, the IMCCE in Paris, the WFPDB in Sofia. The database of astrometric catalogues was recorded in the registry of the NVO in the USA. We hope, that in the near future all our databases will be integrated to the registries of the International Virtual Observatory.

References

- Kovalchuk, A. N., Pinigin, G. I., Protsyuk, Yu. I., & Shulga, A. V. 1997, *Journees 1997 Systemes de Reference Spatio-Temporels. Prague.*, 14-17
- Protsyuk, Yu. 2000, *Baltic Astronomy*, 9, 554-556
- Protsyuk, Yu., Pinigin, G., & Shulga, A. 2005, *Kinematics and Physics of Celestial Bodies, Suppl. Ser.*, 5, 580-584
- Pinigin, G., Protsyuk, Yu., & Shulga, A. 2005, *Romanian Astronomical Journal, Suppl.*, 15, 51-56